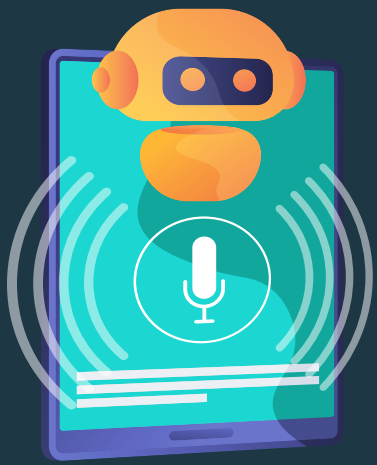


THE MINDS OF MACHINES

Dive into the minds of machines by exploring a bit about each of the *four stages* of Artificial Intelligence (AI).



REACTIVE MACHINES

AI systems that use advanced algorithms to rapidly respond to their environment in real time. These systems can make decisions and take actions without explicit instructions. However, they do not have the ability to store or process past data.

Ex: Siri, Alexa, Chess Programs (i.e. Deep Blue), and Virtual Assistants (i.e. Google Assistant).

WE ARE
HERE



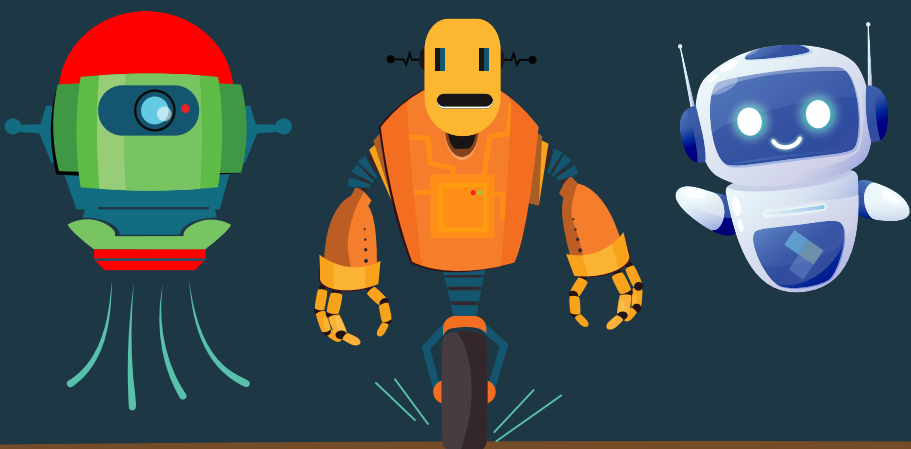
LIMITED MEMORY

Using learning algorithms, this form of artificial intelligence can identify patterns and trends from past data to guide decision-making. While it can adapt its responses based on this analysis, it lacks the capacity to cultivate long-term understanding.

Ex: Self-Driving Cars and Netflix Recommendations

WE ARE
HERE

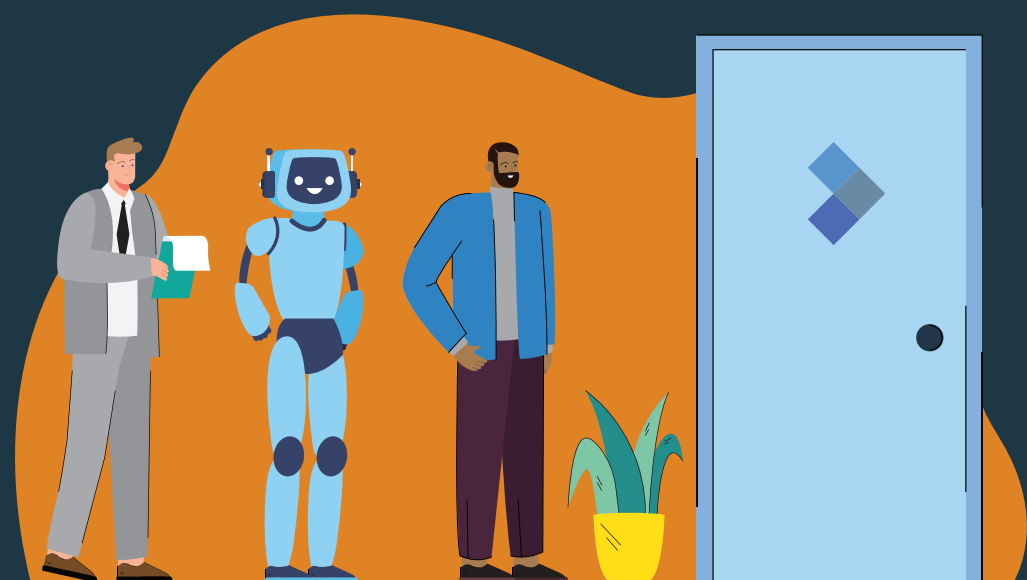
THEORY OF MIND



Theoretical future development of AI systems that can understand human emotions and ways of thinking to predict behaviors. This would allow AI to interact more naturally with humans.

Ex: WALL-E (Disney/Pixar movie) and C-3PO (Star Wars)

WE ARE
NOT HERE



WE ARE
NOT HERE

SELF-AWARENESS

The theoretical creation of AI that achieves consciousness, intelligence, and understanding of its existence.

Ex: Bicentennial Man and Terminator

WORKS CITED:

"images: Freepik.com". This cover has been designed using assets from Freepik.com